



Centerra Gold Inc. - Kara-Beldir 2013 Drilling Results

Period April 1st, 2013 to June 30 st, 2013

Page 1 of 1

Location	Drill Section	Drill Hole	From (m)	To (m)	Core Length (m)	Au (g/t)
Camp	2250NW	KB-177	61.3	62.3	1.0	2.16
			105.0	106.0	1.0	0.70
			118.4	119.4	1.0	7.05
			147.2	149.6	2.4	2.16
			166.9	168.0	1.1	2.15
	2250NW	KB-178	27.7	33.6	5.9	2.09
			<i>includes</i> 27.7	28.7	1.0	5.27
			39.1	40.2	1.1	0.69
			60.1	61.2	1.1	0.79
			83.3	84.3	1.0	0.52
			104.2	105.6	1.4	32.70
			113.6	114.7	1.1	0.74

Notes: All assays reported are actual values with no top cutting factor applied.

Significant mineralized intervals are greater than 0.5 g/t Au and greater than or equal to 1m core length.

True widths for mineralized zones are about 20% to 90% of the stated down hole interval.

This information should be read together with our news release of July 31, 2013.

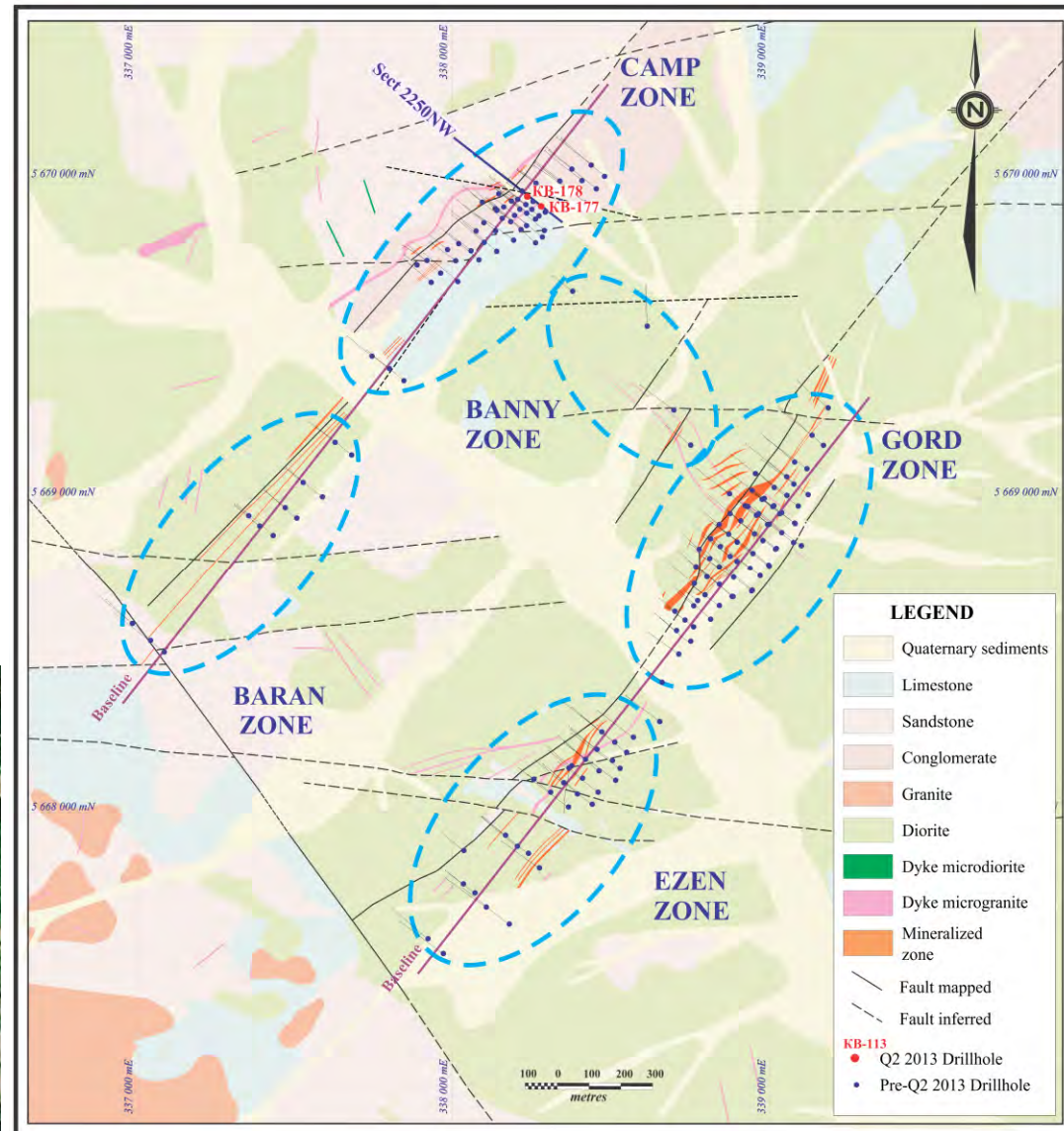
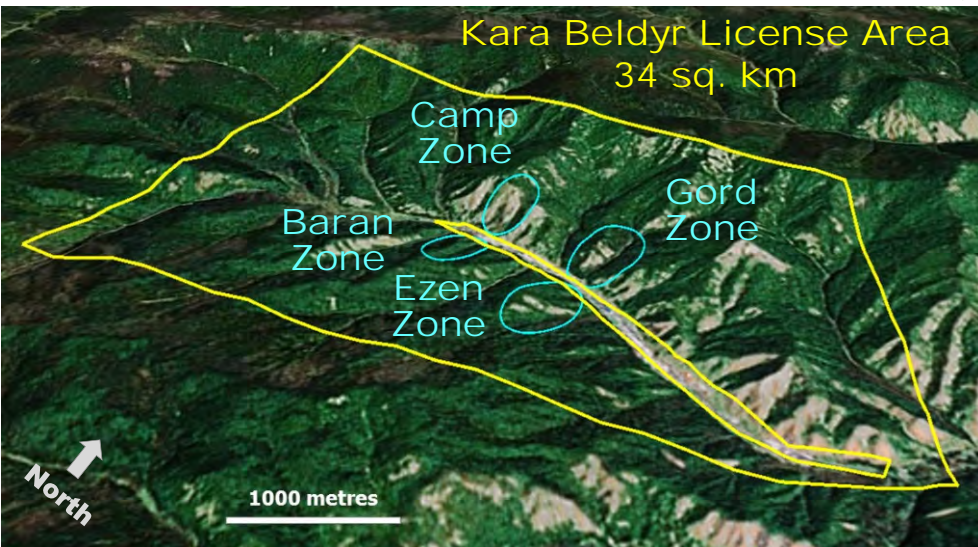
David A. Groves, a Certified Professional Geologist, is Centerra's qualified person for the purpose of National Instrument 43-101

Tables are current as of June 30, 2013.

Drillhole Location Plan Map



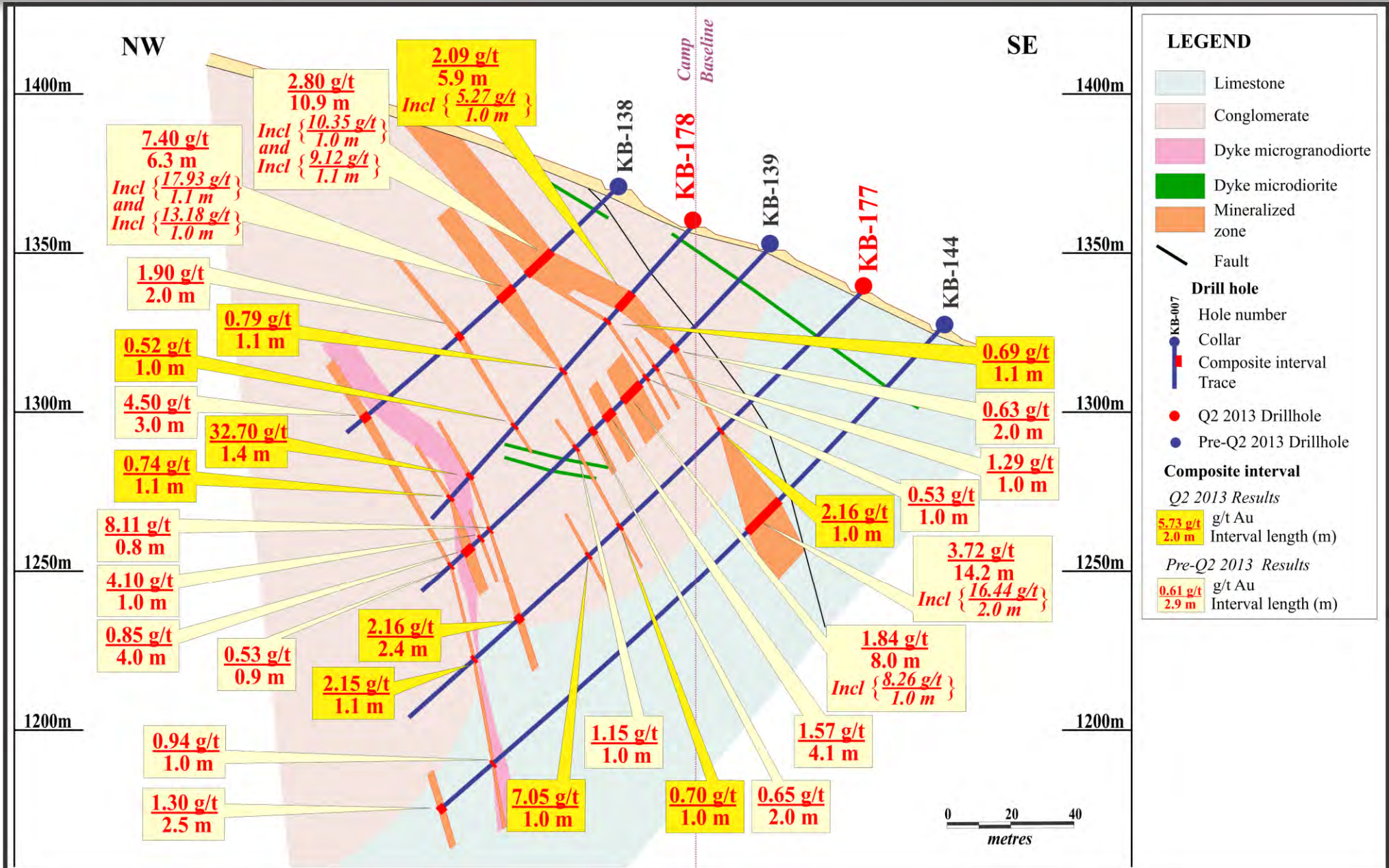
Tyva Republic
Kara Beldyr Project



This information should be read together with our news release of July 31, 2013.

David A. Groves, a Certified Professional Geologist, is Centerra's qualified person for the purpose of National Instrument 43-101.

Camp Zone, Section 2250NW



This information should be read together with our news release of July 31, 2013.

David A. Groves, a Certified Professional Geologist, is Centerra's qualified person for the purpose of National Instrument 43-101.