



Centerra Gold Inc. - Mount Milligan Project
Diamond Drill Hole Locations
Period: April 1 to June 30, 2019

Drill Hole	Location Easting	Location Northing	Elevation (m)	Length (m)	Collar Azimuth	Collar Dip	Location	Purpose
20-1240	434,975.30	6,109,330.37	1060.85	380.1	270	-75.6	Great Eastern Fault zone	In Pit infill/expansion
20-1241	435,020.21	6,109,247.06	1054.91	468.2	269	-58.9	Great Eastern Fault zone	In Pit infill/expansion
20-1242	434,239.00	6,107,464.00	1268.00	393.0	275	-69.3	Rainbow Extension	Brownfield exploration
20-1243	435,020.69	6,109,247.14	1054.84	776.3	271	-79.4	Great Eastern Fault zone	In Pit infill/expansion
20-1244	433,180.00	6,107,980.00	1367.00	377.0	135	-74.0	South Boundary	Brownfield exploration
20-1245	433,188.00	6,109,630.00	1253.00	425.0	137	-64.0	Goldmark	Brownfield exploration

Notes: This information should be read together with our news release of July 31, 2020. Table is current as of June 30th, 2020.
 C. Paul Jago, a Member of Engineers and Geoscientists British Columbia, is Centerra's qualified person for the purpose of National Instrument 43-101.

Projection: UTM NAD83 Zone 10N
 Azimuth: Relative to True North



Centerra Gold Inc. - Mount Milligan Project
Diamond Drill Hole Assay Results
 Period: April 1 to June 30, 2020

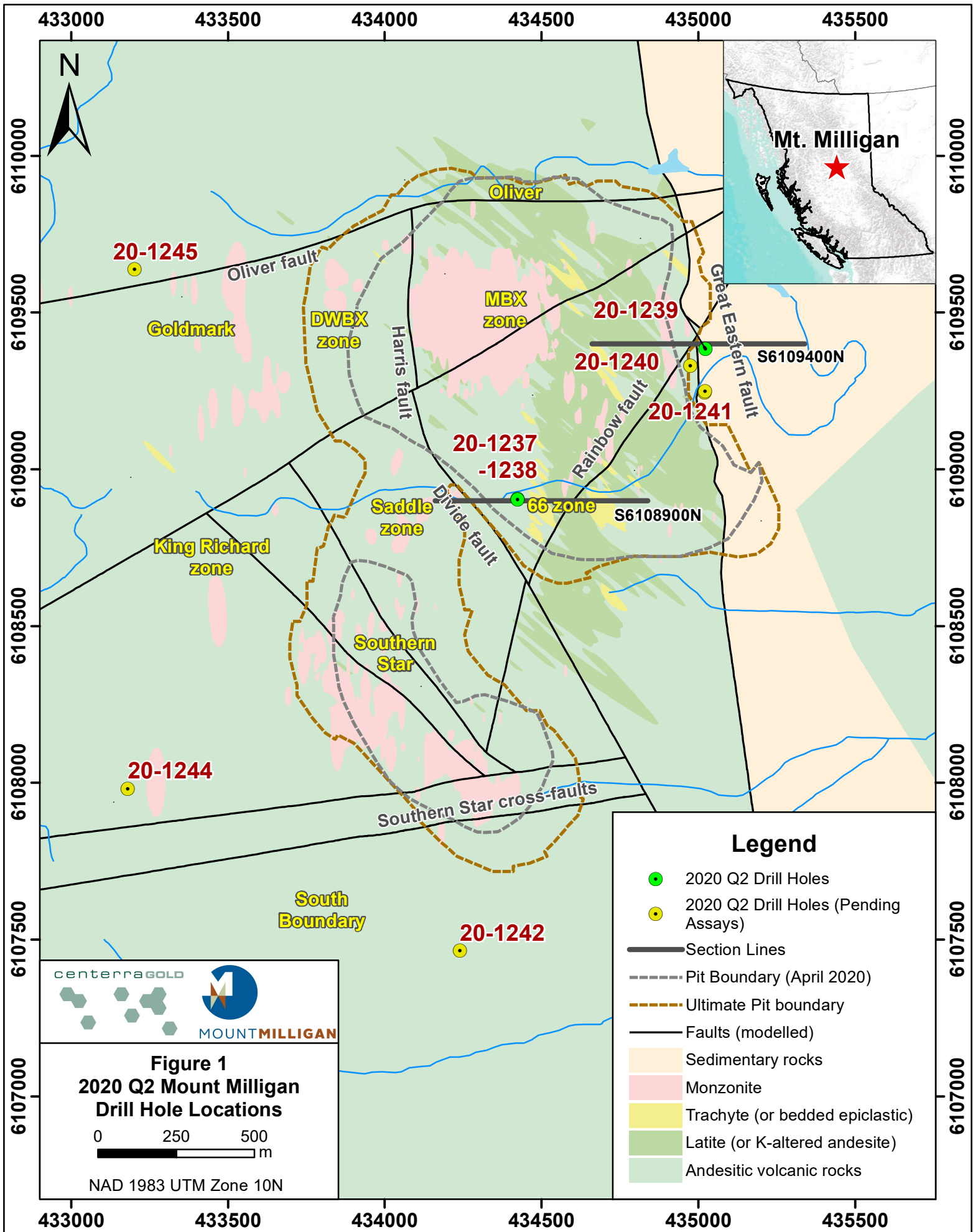
Drill Hole	Location	Purpose	From (m)	To (m)	Core Length (m)	Au ppm	Cu %	Ag ppm
20-1237*	Saddle zone	Section 6108900 N. Infill historically under-drilled area between Saddle and 66 zones.	9.75	26.82	17.07	0.622	0.102	0.4
			<i>including</i> 20.12	26.82	6.70	1.074	0.167	0.6
<i>Abandoned due to ground conditions at 26.82m</i>								
20-1238*	Saddle zone	Section 6108900 N. Redrill of 20-1237. Infill Saddle-66 zone gap and test deep geophysical target.	34.14	66.60	32.46	0.22	0.03	0.20
			72.60	76.60	4.00	0.17	0.02	0.40
			82.00	98.00	16.00	1.19	0.03	8.86
			<i>including</i> 83.45	87.00	3.55	4.79	0.05	38.53
			108.00	117.00	9.00	0.15	0.01	0.14
			124.30	127.70	3.40	0.12	0.02	0.10
			133.56	152.14	18.58	0.17	0.03	0.19
			166.00	180.00	14.00	0.17	0.03	0.15
			199.00	227.00	28.00	0.13	0.02	0.10
			240.60	249.00	8.40	0.12	0.09	0.46
			261.00	268.00	7.00	0.10	0.07	0.28
			273.70	279.70	6.00	0.11	0.05	0.23
			300.55	310.40	9.85	0.14	0.07	0.25
			323.11	341.83	18.72	0.11	0.03	0.31
			369.00	385.00	16.00	0.16	0.03	0.15
			393.00	415.47	22.47	0.15	0.05	0.84
			<i>including</i> 421.00	434.50	13.50	0.43	0.11	1.56
<i>including</i> 421.00	423.00	2.00	1.85	0.04	1.00			
<i>including</i> 439.95	516.00	76.05	0.81	0.03	0.85			
<i>including</i> 449.80	463.00	13.20	1.57	0.07	1.59			
<i>and</i> 489.04	491.00	1.96	3.50	0.05	1.70			
<i>and</i> 496.82	498.82	2.00	3.20	0.08	1.80			
<i>and</i> 510.00	512.00	2.00	4.57	0.02	0.80			
524.00	537.00	13.00	2.17	0.02	1.38			
<i>including</i> 524.00	535.53	11.53	2.41	0.02	1.32			
20-1239*	Great Eastern Fault zone	Section 6109400 N. Test for mineralization in GE Fault zone and footwall block.	50.70	56.00	5.30	0.17	0.14	1.04
			275.13	308.00	32.87	0.19	0.22	1.24
<i>including</i> 278.00	279.87	1.87	1.05	0.92	3.60			
20-1240	Great Eastern Fault zone	Section 6109350 N. Test for mineralization in northward extension of GE Fault zone and fault footwall.	<i>Results are pending</i>					
20-1241	Great Eastern Fault zone	Section 6109245 N. Test for mineralization in northward extension of GE Fault zone and fault footwall.	<i>Results are pending</i>					
20-1242	SS South/RF Extension	Section 6107450 N. Test for zone of high Au:Cu ratios (1.6-2.5), SSW extension of Rainbow Fault and trend of porphyry stocks.	<i>Results are pending</i>					



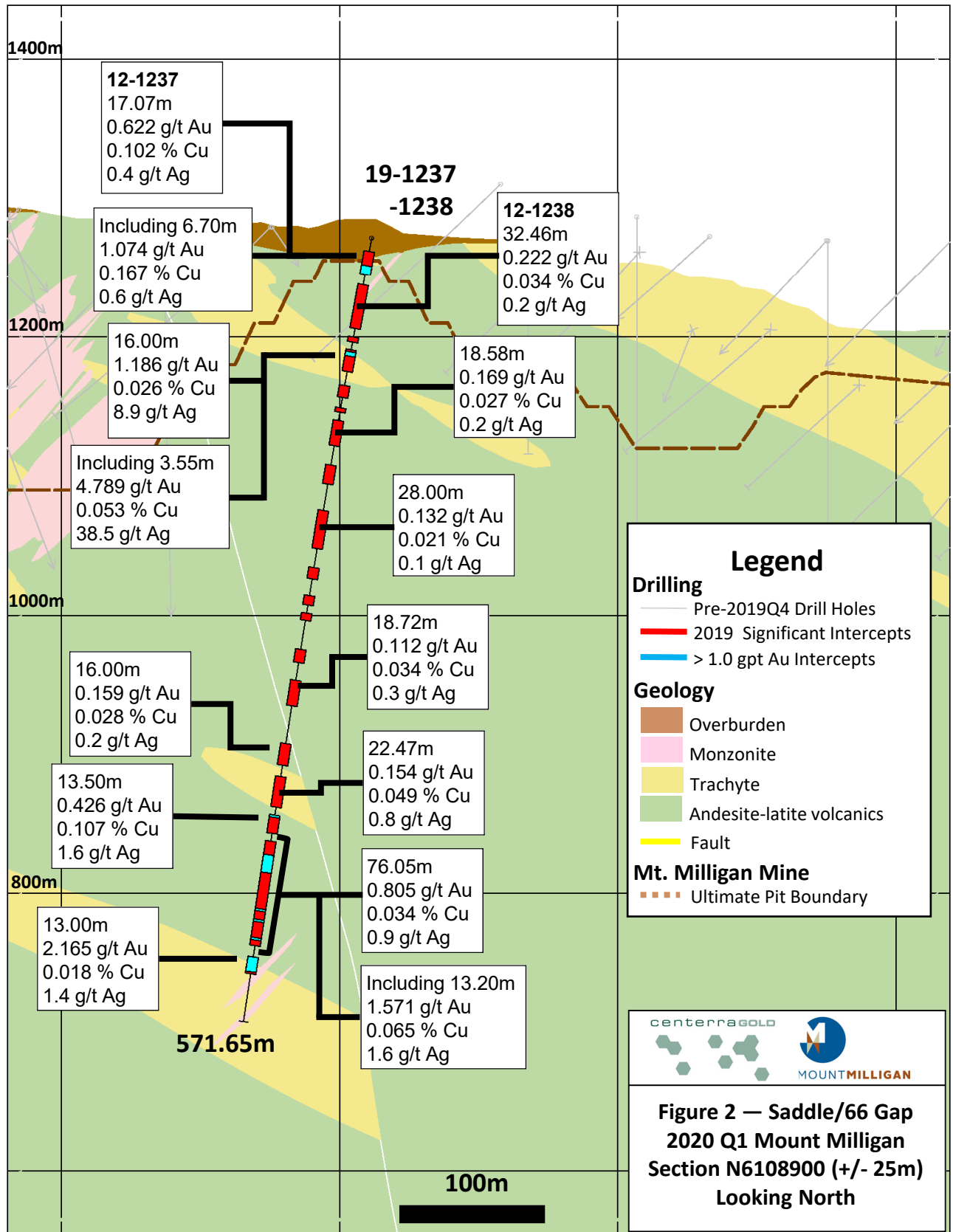
Centerra Gold Inc. - Mount Milligan Project
Diamond Drill Hole Assay Results
 Period: April 1 to June 30, 2020

Drill Hole	Location	Purpose	From (m)	To (m)	Core Length (m)	Au ppm	Cu %	Ag ppm
20-1243	GE Fault	Section 6109250 N. Test for mineralization in northward extension of GE Fault zone and fault footwall.	<i>Results are pending</i>					
20-1244	South Boundary	Section 6108000 N. Test coincident west-dipping chargeability gradient zone and magnetic high anomaly.	<i>Results are pending</i>					
20-1245	Goldmark	Section 6109650 N. Test for mineralization in chargeability high-resistivity low. Fence of 3 drill holes.	<i>Results are pending</i>					

Notes: Assays are reported true values without top cutting. Reported intervals are longer than 2.0 m, grade greater than 0.1 g/t Au or 0.1% Cu and include maximum internal waste of 4.0 m where it exists. Intervals less than 2.0 m but with grade above 1.0 g/t Au are also reported. Significant assay intervals reported represent apparent widths due to the undefined geometry of mineralization in this zone, relationship between fault blocks, and conceptual nature of the exploration target. This information should be read together with our news release of July 31, 2020. C. Paul Jago, a Member of Engineers and Geoscientists British Columbia, is Centerra's qualified person for the purpose of National Instrument 43-101.
 * Indicates hole completed in previous quarter, assay results returned in current quarter.

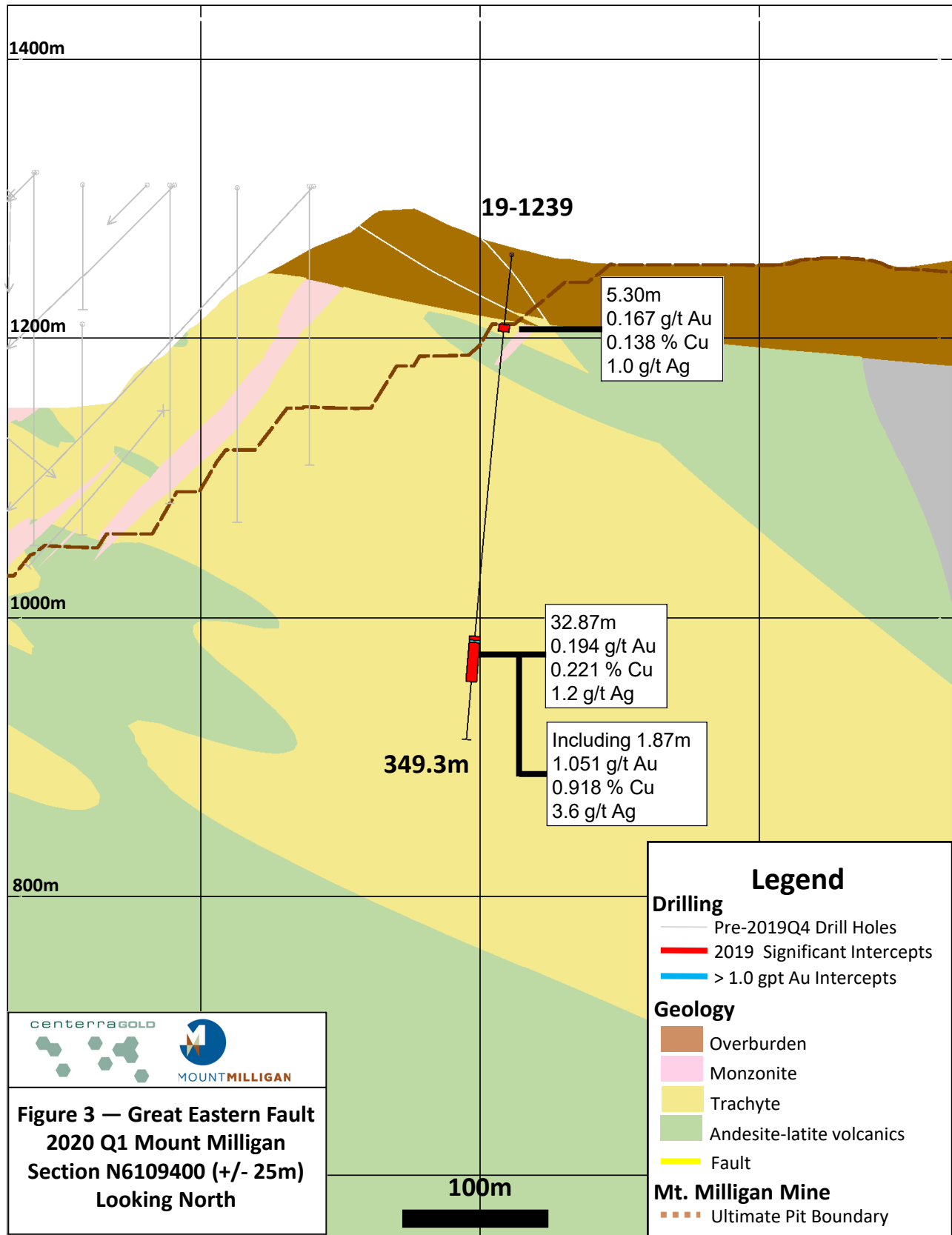


This information should be read together with our news release of July 31, 2020
 C. Paul Jago, a Member of Engineers and Geoscientists British Columbia, is Centerra's qualified person for the purpose of National Instrument 43-101.



This information should be read together with our news release of July 31, 2020.

C. Paul Jago, a Member of Engineers and Geoscientists British Columbia, is Centerra's qualified person for the purpose of National Instrument 43-101.



This information should be read together with our news release of July 31, 2020.
C. Paul Jago, a Member of Engineers and Geoscientists British Columbia, is Centerra's qualified person for the purpose of National Instrument 43-101.